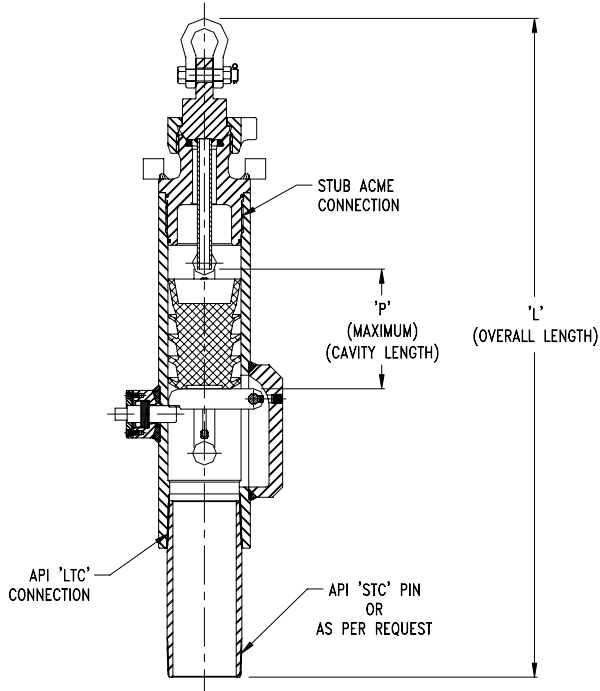




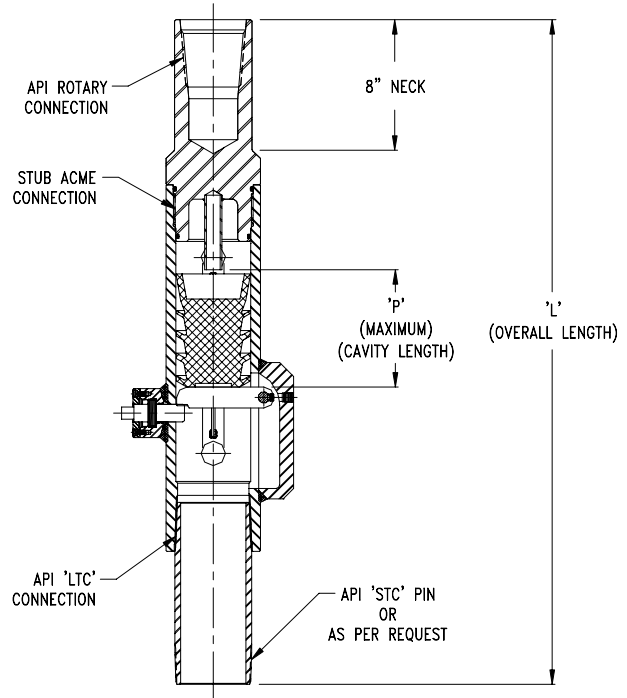
**ARGUS MACHINE CO. LTD.**  
 5820 – 97 Street  
 Edmonton, Alberta, T6E 3J1  
 Ph: (780) 434 – 9451  
 Fax: (780) 434 – 9909  
[www.argusmachine.com](http://www.argusmachine.com)

|                     |               |
|---------------------|---------------|
| Technical Bulletin: | TB-CH-004     |
| Revision:           | 02            |
| ECN:                | 00617         |
| Effective Date:     | Dec. 12, 2006 |
| Prepared By:        | D.S.M.        |
| Approved By:        | B.T.S.        |

## Argus Single Plug Drop Bar Cement Head Data Sheet



STANDARD CONFIGURATION



TOP DRIVE CAP (OPTION)

**NOTES:**

- 1.) Data is based on cement heads with 2" Fig. 1502 Female Inlets at 14" manifold center to center length.
- 2.) Contact engineering department for 'P' and 'L' length(s) for different center to center length(s).
- 3.) Different API Rotary Connections available upon request.

| Size   | Assembly Part No. | M.A.W.P. | 'P'      | 'L' Standard Configuration | 'L' Top Drive Cap (Option) |
|--------|-------------------|----------|----------|----------------------------|----------------------------|
| 4 1/2" | C3800001          | 5000 PSI | 7 15/16" | 46 15/32"                  | 43 1/8"                    |
| 5"     | C3800002          | 5000 PSI | 8 11/16" | 50 27/32"                  | 47 1/2"                    |
| 5 1/2" | C3800003          | 5000 PSI | 8 11/16" | 50 23/32"                  | 47 3/8"                    |
| 6 5/8" | C3800004          | 4000 PSI | 8 11/16" | 51 11/32"                  | 48 1/2"                    |
| 7"     | C3800005          | 4000 PSI | 8 11/16" | 52 7/32"                   | 49 3/8"                    |

**Specifications Are Subject to Change Without Prior Notice.**