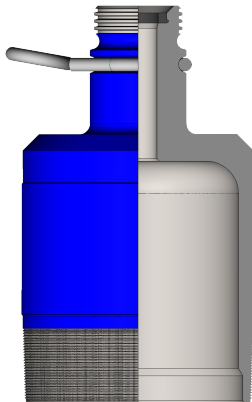


# CIRCULATING SWAGES

## FEATURES

- 2" 1502 female hammer union thread half top connection (optional 3" 1502 female thread half)
- Available with API casing or rotary thread connections
- Premium threads & other connections available on request
- Complete with swivel ring for safety line tie-off and handling



Casing threads  
manufactured in  
accordance with  
API Spec 5B



Rotary threads  
manufactured in  
accordance with  
API Spec 7-2

## CASING SWAGE

CASING SIZE	MAWP (psi)	PART NO. (SC THREAD)	PART NO. (BC THREAD)
4 1/2"	10,000	SW010011	SW010012
5"	10,000	SW020007	SW020008
5 1/2"	10,000	SW030010	SW030011
6 5/8"	TBD	TBD	TBD
7"	10,000	SW050010	SW050011
7 5/8"	7,500	SW060006	SW060007
8 5/8"	7,500	SW070006	SW070007
9 5/8"	7,500	SW080017	SW080018
10 3/4"	5,000	SW090009	SW090010
11 3/4"	5,000	SW100003	SW100004
13 3/8"	5,000	SW110013	SW110014
16"	4,000	SW120003	SW120004
18 5/8"	2,500	SW160005	
	4,000		SW160006
20"	2,500	SW170002	
	3,000		SW170003

## ROTARY SWAGE

THREAD	MAWP (psi)	PART NO.
NC31 (2 7/8" IF)	10,000	SW130009
NC38 (3 1/2" IF)	10,000	SW130001
3 1/2" Extra Hole	10,000	SW130005
3 1/2" Full Hole	10,000	SW130004
NC40 (4" FH)	10,000	SW130003
NC50 (4 1/2" IF)	10,000	SW130006
NC46 (4 1/2" XH)	10,000	SW130002
4 1/2" Full Hole	10,000	SW130007
5 1/2" Full Hole	10,000	SW130008

**ARGUS GROUP OF COMPANIES**  
Edmonton • Calgary • Houston • Nisku