

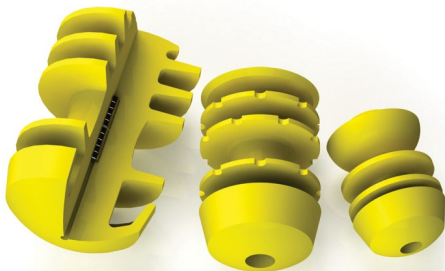
ARGUS URETHANE PIGS

Cup and Disc Pigs



- Argus offers a full range of cup and disc urethane pigs that are also compatible with fiber reinforced pipelines.

Specialty Pigs



- Mag Pigs** supplied with rare earth magnets for non-intrusive pig signaling
- Filming Pigs** for batch, corrosion inhibition programs
- Low-Flow Pigs** with a two-cup design for pigging at low pressure differentials

NOMINAL PIG SIZE	PIPE WALL THICKNESS		PIG LENGTH		COLOR	DUROMETER (SHORE 'A')
	in	(mm)	in	(mm)		
2 INCH	.154 - .188	(3.91 - 4.78)	4.50	(114.3)	Grey	60
					Yellow	70
					Blue	80
					Black	90
3 INCH	.109 - .125	(2.77 - 3.18)	5.75	(146.0)	Purple	60
					Green	70
					Red	80
					Orange	90
	.156 - .188	(3.96 to 4.78)	5.75	(146.0)	Grey	60
					Yellow	70
					Blue	80
					Black	90
4 INCH	.109 - .125	(2.77 - 3.18)	7.50	(190.5)	Purple	60
					Green	70
					Red	80
					Orange	90
	.156 - .188	(3.96 to 4.78)	7.50	(190.5)	Grey	60
					Yellow	70
					Blue	80
					Black	90
6 INCH	.109 - .125	(2.77 - 3.18)	10.50	(266.7)	Purple	60
					Green	70
					Red	80
					Orange	90
	.156 - .280	(3.96 - 7.11)	10.50	(266.7)	Grey	60
					Yellow	70
					Blue	80
					Black	90
8 INCH	.250 - .375	(6.35 - 9.53)	14.25	(362.0)	Grey	60
					Yellow	70
					Blue	80
					Black	90
10 INCH	.250 - .438	(6.35 - 11.13)	17.25	(438.2)	Grey	60
					Yellow	70
					Blue	80
					Black	90
12 INCH	.250 - .500	(6.35 - 12.70)	20.00	(508.0)	Grey	60
					Yellow	70
					Blue	80
					Black	90
14 INCH	.250 - .500	(6.35 - 12.70)	22.38	(568.5)	Grey	60
					Yellow	70
					Blue	80
					Black	90
16 INCH	.500 - 1.125	(12.70 - 28.70)	24.63	(625.6)	Grey	60
					Yellow	70
					Blue	80
					Black	90
20 INCH	.500 - 1.125	(12.70 - 28.70)	30.63	(778.0)	Grey	60
					Yellow	70
					Blue	80
					Black	90